

Three utilities work together to provide clean water for the citizens of Rochester:

- **Rochester Public Utilities**
provides GroundWater Protection
- **Rochester Public Works**
provides StormWater Management
- **Rochester Water Reclamation Plant**
provides WasteWater Treatment

Now these Rochester Water Utilities are working to educate our community about clean water through several interactive exhibits at the new Cascade Meadow Wetlands & Environmental Science Center. The center is a regional resource for education on water, energy, and wetlands.

We invite you to visit the center and learn from our exhibits...

2900 19th Street NW, Rochester
For hours and events visit:
www.cascademeadow.org



Photo by Josh Banks

ANSWERING QUESTIONS

Contact the appropriate water utility for questions and concerns:



GROUNDWATER PROTECTION:

ROCHESTER PUBLIC UTILITIES
4000 East River Road NE
Rochester, MN 55906-2813
www.rpu.org • (507) 280-1500



STORMWATER MANAGEMENT:

ROCHESTER PUBLIC WORKS
201 4th St. SE, Rm 108 • Rochester, MN 55904
www.rochesterstormwater.com • (507) 328-2440

WASTEWATER TREATMENT:

ROCHESTER WATER RECLAMATION PLANT
301 37th St. NW • Rochester, MN 55901
www.rochestermn.gov • (507) 328-2650

Keeping it Clean



GroundWater PROTECTION



WasteWater TREATMENT



StormWater MANAGEMENT



Printed on recycled paper

Our Water Is In Your Hands...

ROCHESTER'S WATER UTILITIES...

Educating Our Community About Clean Water

Visit our exhibits at Cascade Meadow Wetlands & Environmental Science Center to learn how you can help keep our water clean...

DOWN THE DRAIN

This exhibit shows how wastewater is cleaned while recovering energy and nutrients. It teaches you how to help maintain our complex wastewater collection and treatment systems.

FROM STREETS TO WATERWAYS

This exhibit teaches you how your actions on land affect water and shows how to keep our water clean.

OUR WATER FOOTPRINT

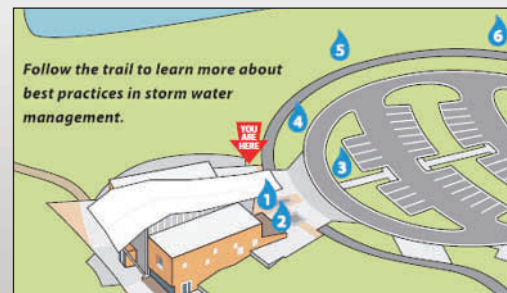
This exhibit compares water use in the U.S. to other countries and focuses on conservation tips. It shows how much water is needed to create the products we use every day.

STORM WATER TRAIL

This exhibit is an outdoor, self-guided trail and highlights the innovative practices used at Cascade Meadow to capture and treat runoff. It shows how you can use these same practices at your home or business.

WATER CONNECTIONS

LED lights show where water moves and how our three water utilities, nature, and you are connected.



Learn more on the websites listed on the back of this brochure, or visit: www.cascademeadow.org



Cascade Meadow
Wetlands & Environmental Science Center